



2020-2021 6-8TH FREQUENTLY ASKED QUESTIONS 2.0

Questions taken from staff and family surveys and schoolwide Town Halls regarding SFS Reopening. 6-8th FAQ 2.0 builds on the answers provided in K-8th FAQ 1.0. These responses are based on county and state guidelines as of November 2, 2020, and are subject to change.

CLASS SIZES & COMPOSITION

Will the class be split into smaller groups when on campus?

The 6th Grade class will be divided into two cohorts (Blue and Green) and will primarily be in separate modular classrooms. They may have Health and Wellness as a whole class when outdoors and physically distanced.

7th and 8th Grades will each operate as a single cohort. When the weather is good, however, they will often split into two groups to lower the student-teacher ratio for classes, using the outdoor space as a classroom.

How are cohorts chosen?

The composition of the cohorts is based on the learning needs of the students. The School will not base cohort composition on existing pods, social groups, or previous *School on the Go* groups.

Will students be in one room all day or will they transition to other classrooms for specialists? How often will they be in frequently used rooms which will need electrostatic spraying in between?

For 6th Grade at Gaven St., most often students will stay in their main classroom and teachers will come to them. However, when they move to an indoor specialist classroom (e.g., music and art rooms), the electrostatic spray will occur between cohorts with at least 30 minutes between classes.

For 7th and 8th Grades at Tunnel Ave., there is only one main indoor space. They will move between the indoor and outdoor spaces for classes.

How will cohorts be taught?

Cohorts will remain in their designated classroom for most of the day.

With respect to specialist classes, specialists will be gradually phased in, beginning with remote instruction (e.g., students in their classroom taught remotely by staff in a different location).

Eventually, for in-person 6th grade classes at Gaven St., specialists will join a cohort in its classroom whenever possible (e.g., Spanish). In other cases, a cohort may travel to specialist rooms (e.g., art and music), and the specialist room will be cleaned in between classes.

When teaching in-person, the specialists will minimize the number of groups they teach within a given day, and the number of staff who come into contact with each cohort will be limited.

Like students, all teachers will use universal precautions, including masks and physical distance. In accordance with SFDPH guidelines, all adults who enter classrooms will be tracked on a daily log accessed through QR codes outside each classroom to facilitate contact tracing should it become necessary.

Are the specialist classes on campus as well as virtual days?

Specialists will work both on site and will teach on virtual days depending on the day and subject.

How will a student's cohort be affected when someone tests positive in their sibling's cohort?

If someone within a student's cohort is COVID positive, that cohort must quarantine. That student's sibling would also need to quarantine, but the sibling's cohort would not need to quarantine (more on symptomatic and COVID positive staff/students on page 2-4).

What parameters will be set up to keep kids safe during breaks, lunch, and PE?

Clear expectations, consistent supervision, and routines to guide behavior to maintain physical distance and good hand-washing practices will help keep students and adults safe during recesses, lunch, and PE.

How many cohorts will be outside during recess?

At Gaven St., each grade from K-6, will have separate recesses. There will not be interaction between different grades at recess. Although there may be more than one grade outside at a time, there will be designated areas assigned to prevent them from intermingling.

Out of an abundance of caution, each grade level will use its own balls, jump ropes, and other equipment during its designated play time.

TUNNEL AVE

Can parents/guardians visit the Tunnel Ave. facility?

We hope to be able to do a COVID safe opportunity for parents/guardians to see Tunnel Ave.

Is the property secure? Will kids be going offsite?

333 Tunnel Ave. is a complex of a church and its associated buildings. There are locking gates around the entire property that can only be opened by SFS and church staff during school hours. Students will not be permitted off the premises during school hours. Adult staffing will include an administrator in addition to the teaching staff on site at all times during school hours.

Why is in-person learning at Tunnel Ave. preferable to SOTG, given the facility's location, the limitations of the space, the size of the 7-8th grade classes, and the lack of 1:1 teacher/student opportunities and small-group work?

In-person gives students a chance to socialize with one another without technology. Students can read and follow cues from the group, something that is more difficult to do when remote. The opportunity for in-person learning for students helps address feelings of isolation that impede learning. There will be some capacity for 1:1 engagement, particularly because we have the flexibility of outdoor space and different zones in the indoor space.

The rotating model allows us to also experience the closeness and connection that virtual classrooms can allow because we can meet in small groups and see each other's faces.

Why can't the 333 Tunnel Ave. space accommodate two smaller classes (16/17) inside, rather than one larger class (33)?

We can do two groups by using indoors and outdoors. We cannot do two groups indoors with two teachers simultaneously leading different classes because there is no divider for the room and the sound impact would be too disruptive for both groups.

Is there an outdoor area for children to play in?

This is one of the reasons we are excited about Tunnel Ave. There is an expansive outdoor area for students to play basketball and futsal and have time to move in the space to themselves.

Will teachers be going back and forth between Gaven St. and Tunnel Ave.?

Yes, teachers for Spanish (Sandra, Manuel, and Dimitri), Health and Wellness (Coach Tiff), art (Sadie), and music (James and Sofia) will move between campuses. Sometimes they will teach on the two campuses on different days, and other times they'll teach at one site in the morning and the other site in the afternoon.

Will 8th graders have lab and specialist classes at Tunnel Ave.?

Yes. We will bring equipment as needed for students to have hands-on science experiences.

Will the students be at desks?

Each student will have their own desk and their own box of frequently-used items.

How will teachers be heard if they are masked and the kids are spread apart?

Teachers use personal voice amplification devices. They will repeat students' questions or comments to ensure they are heard. We are iterating on how to assist students in hearing each other more easily during class discussions.

How will half groups be taught outside when weather permits?

We have tables and a white board that can be taken outside. Weather permitting, one teacher can hold class outdoors while another teaches indoors.

HEALTH & SAFETY PROTOCOLS

Will SFS require students to get flu shots or COVID-19 vaccines if available?

We strongly recommend students, staff, and families get flu shots. We cannot make a determination about a COVID-19 vaccine until one is readily available.

Will temperatures be taken daily?

Since COVID-19 illness is so frequently asymptomatic, temperature checks are an unreliable way of screening for infection. Temperature checks are not required by the San Francisco Department of Public Health (SFDPH), California Department of Public Health (CDPH), or the Centers for Disease Control (CDC).

How do I notify the school nurse of my child's symptoms?

Each morning, the ParentSquare health screen should be completed at home by 8:00 am. If your child has symptoms that are consistent with COVID-19 (as per [SFDPH COVID-19 symptoms](#)), they will not be admitted to campus. These symptoms are:

- Fever (100.4°F/38°C or higher) or chills
- Cough
- Sore throat
- Shortness of breath or difficulty breathing
- Not being able to taste or smell, or saying that things taste or smell different (within the last 10 days)
- Headache
- Diarrhea
- Nausea or vomiting

If you have a question or concern regarding your child's symptoms, please call the front desk at (415) 239- 5065. The school nurse will be available by email starting at 7:30 am, and by phone at (415) 287-2002 between 7:45 am- 3:45 pm. *If you are emailing her (nurse@sfschool.org), please copy your child's head teacher and division head on the message.*

What is the School's policy on testing students for COVID-19?

Because there are a number of approaches and beliefs regarding testing students, SFS convened a Testing Strategy Group composed of staff and expert parents to determine the best policy for SFS. Based on their recommendations, the School is requiring and providing COVID testing as follows (this may change as circumstances evolve):

- All middle school students will be tested prior to returning to campus and regularly once back on campus.
- If a cohort must quarantine for 14 days due to exposure to a confirmed COVID case, the school will test every member of the cohort before their return to in-person learning.
- Testing on site will be offered to any symptomatic student who becomes ill while at school prior to the parent/guardian picking up the student.

What happens if a staff member or students becomes ill at Tunnel Ave.?

If a staff member is ill, they will notify their supervisor and go home as soon as possible.

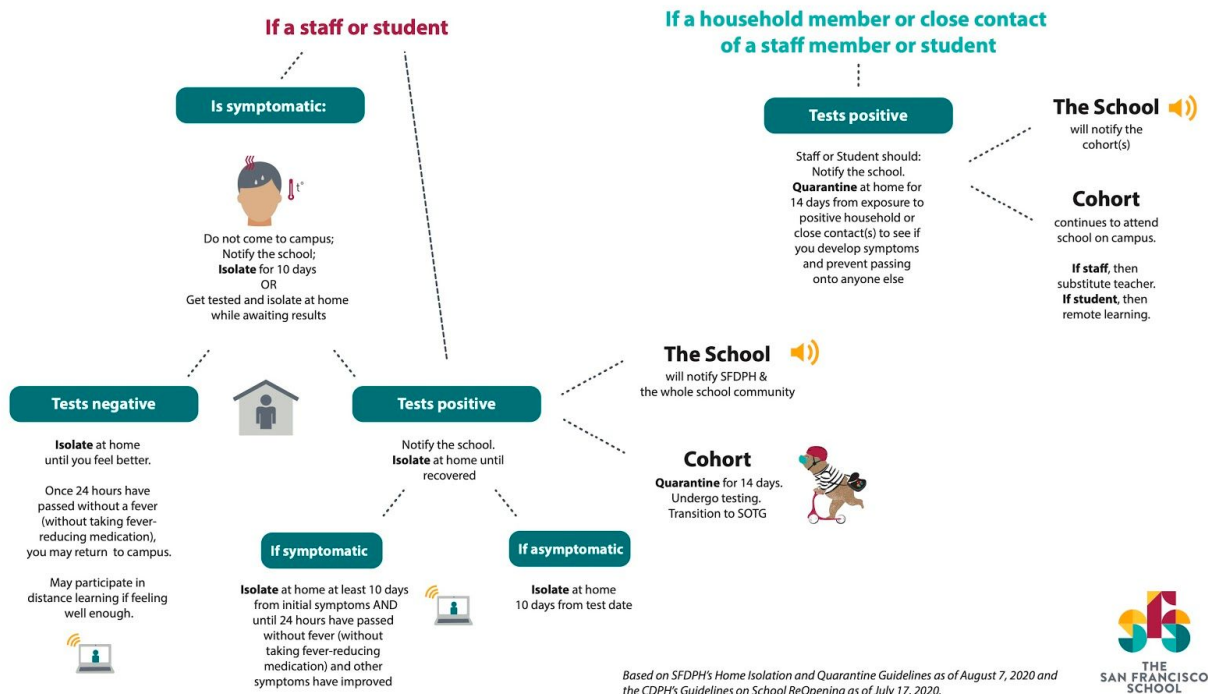
If a student is ill, they will be taken to the Tunnel Ave. isolation room which has been stocked with a cot, PPE, medical supplies, and other items. The School Nurse will be contacted, and a TeleHealth assessment may be performed. The student will remain isolated until a caregiver arrives to take them home. The student will be accompanied to the Tunnel Ave. entry to be released to the caregiver.

What happens if a staff member or student tests positive? What about a household member?

In partnership with the SFDPH, the school community will be notified if a staff member or student tests positive for COVID-19. All staff/students within the cohort should undergo testing and quarantine for 14 days. During the isolation period, students will attend *SOTG*.

If a household member of a staff/student tests positive, that staff/student will stay home and quarantine for 14 days. The School will notify the student/staff's cohort who will continue to attend school on campus.

Per the [SFPDPH Home Isolation and Quarantine Guidelines](#) and the [California DPH Guidelines on School ReOpening](#):



What is the protocol when a staff or student's household contact has symptoms but does not yet have COVID test results?

That staff/student should quarantine at home until the household contact receives their test results. If the household contact is negative and the staff/student is symptom free, they can return to school. If results are positive, the staff/student should continue to quarantine for 14 days from the last exposure. If the staff/student develops symptoms, testing is recommended (per [SFPDPH's Isolation and Quarantine Guidelines](#)). Even in the absence of symptoms, the staff/student should consider being tested to provide more information regarding staff/student's condition as well as for exposed contacts at school.

Where should one get tested?

If you need a COVID test other than when one is being offered at school (as described above), for fastest follow up care, we recommend being tested by your health care provider. Testing information is also available at <https://sf.gov/find-out-how-get-tested-coronavirus>.

When should the School be notified of a positive COVID test?

Per the [School Best Practices Directive](#), the SFPDPH mandates families to notify the School within an hour of learning if a student's COVID test is positive or inconclusive (documentation

should be provided to the School within 48 hours). Families should also notify the school immediately if anyone with whom your student has had close contact (within 6 feet for more than 15 minutes) tests positive for or is suspected of having COVID-19.

Will the SFS community be notified when there is a COVID-19 case at school?

In public health, the patient's privacy is a mandate. In accordance with the Americans with Disabilities Act and the Family Education Rights and Privacy Act, the identity of the person with COVID-19 will not be shared. However, the School will notify the community if there is a confirmed case on campus.

When would it be necessary to close the entire school?

Individual school closure may be appropriate when there are multiple cases in multiple cohorts at a school or when at least 5% of the total number of teachers/student/staff are cases within a 14-day period. The SFDPH may also determine school closure is warranted for other reasons, including results from public health investigation or other local epidemiological data.

What is the School's policy on travel outside of the Bay Area?

We know this presents a challenge for a number of families and staff. Per the [SFDPH](#), you should limit nonessential travel during the pandemic. Travel increases interactions with people outside of your household, increasing the risk of getting and spreading COVID-19, especially when indoors with a larger number of people involved and the longer the duration of interactions.

During a flight, especially with increased duration, it is likely that you or those seated around you may not wear a face covering at all times. Given the high stakes of one traveler potentially transmitting to a cohort or even the school, the School's stance must be cautious and consistent with health authority mandates. On October 1, 2020, the COVID-19 School/Childcare Team of the SFDPH provided the following (which can also be found in the [SFDPH FAQs](#)):

Figure 1. Travel outside San Francisco for vacation or business, SFDPH FAQs

If I'm outside San Francisco travelling for vacation or business, am I allowed to come home?

Yes, the Order allows you to come home. But upon returning from travel outside the Bay Area, you are strongly encouraged to quarantine for 14 days if you engaged any of the following activities that place you at a higher risk of contracting the virus that causes COVID-19:

- you interacted for more than 15 minutes within six feet of someone outside your household when you or the other people around you were not wearing a Face Covering at all times;
- you were indoors, including on a plane, train or bus, and either you or those around you were not wearing face coverings at all times;
- you interacted for more than 15 minutes within six feet of someone—either with or without a Face Covering—who was experiencing symptoms of COVID-19 or who began to experience symptoms of COVID-19 within 48 hours of your interaction with them.

(Amended 8/18/2020)

To provide the maximal protection for the safety of our entire community and to conduct in-person school as cautiously as possible, the School asks its staff and families to observe these guidelines as strictly as possible. Since passengers in flight must be unmasked to eat or drink, and since it is impossible to know whether someone within six feet of you experiences COVID-19 symptoms within 48 hours of your interaction with them, **our policy requires a 14-day quarantine after air travel.**

When a staff/student’s household member travels, if that household member can quarantine within the home (as per the [SFDPH Isolation and Quarantine](#) guidelines), the staff/student may still attend school. This requires the household member who has traveled to remain separate from others in the home with separate bathroom and sleeping area. If it is necessary to be in the same room, masks should be worn. Household items should not be shared. Please see further details in the provided link.

Is quarantine required after travel within a private vehicle?

As long as occupants of the vehicle are from the same household and higher risk behavior is avoided during travel and/or at the destination, no quarantine is necessary.

If a staff/student travels by air during Thanksgiving week or Winter Break, will they be required to engage in distance learning during the 14 days after they return?

If a staff/student travels by air, a 14 day quarantine will be required. If your family chooses to travel over the break, we may not be able to provide simultaneous distance learning during your 14 day quarantine. Our priority will be to meet the needs of students who are already in distance learning because they were not able to return to campus. We will do our best to support families who are quarantining due to travel.

As a community, we have chosen to prioritize in-person learning. Our 14 day quarantine after travel allows many of our staff and families to be comfortable participating in our in-person program and is supported by the current guidelines of the SFDPH.

As a community, the SFS staff and families have worked so hard to resume in-person learning. We do not want to jeopardize that now, especially so soon after getting back on campus. Although in-person learning will resume immediately after the Thanksgiving Break, the School and the Reopening Task Force are considering alternatives for after Winter Break to allow more latitude for travel and quarantine.

What will the school schedule be like?

6th and 7th Grade will begin in-person learning on November 9 and 8th Grade on November 16. **School drop-off and pick up times are currently as follows, but are subject to change:**

Monday - Thursday

Grade	Arrival	Departure
6th Grade at Gaven St.	8:30 - 8:45 am	3:45 - 4:00 pm
7-8th Grade at Tunnel Ave.*	8:00 - 8:30 am	3:30 - 4:00 pm
7-8th Grade in SOTG*	Start 8:30 am	End 3:30 pm

*alternating

Fridays

Grade	Arrival	Departure
6th Grade in SOTG	10:00 am	3:30 pm
7-8th Grade at Tunnel Ave*	9:30 - 10:00 am	3:30 - 4:00 pm
7-8th Grade in SOTG*	Start 10:00 am	End 3:30 pm

*alternating

Pick-up and drop-off periods at Tunnel Ave. are extended to allow greater flexibility for all Middle School families, especially those with students at Gaven St. and Tunnel Ave. Because the facility is enclosed and there is only a single cohort on the premises at a time, it is also an excellent opportunity for unstructured socializing.

Why is a delayed start still needed on virtual Fridays in this new model?

We will continue to hold staff meetings on Friday mornings. Staff meetings are critical to our collective work. For this year, while there are significant limitations for in-person gatherings, we will continue to hold our weekly staff meeting in the morning.

What will the drop-off procedure be?

The grade-specific arrival and departure times will be communicated to each grade by the Division Heads. To avoid contact between grades, three different entrances to the Gaven St. campus will be used -- they are the West Greentop (2nd, 4th, and 6th Grades), the Main Gate (Preschool, 1st, 3rd, and 5th Grades), and the Preschool Gate (Preschool and Kindergarten). At Tunnel Ave., there is a single drop-off point.

Each morning, the ParentSquare Health Screen must be completed at home before 8:00 am (if the health screen has not been completed upon arrival, the caregiver and student will have to reenter the carpool line at the end to expedite the process for all students). If your child is ill, or if you have concerns or questions related to your child’s health, please contact the School Nurse (nurse@sfschool.org) as well as your child’s advisor and Nancy Nagramada. Emailing all three staff members is helpful in facilitating internal communication.

Please be on time, remain masked, and stay physically distant from other community members to ensure separation of groups and their greatest safety. Reinforce with your child at home that “Space keeps us safe.” As they arrive at their campus entrance, they should maintain 6 feet of distance (if there is a line, they should stand on the sidewalk as marked as they wait).

Students who are walking or biking to the school will be met by a staff member at their designated entrance to ensure their health screen is complete prior to entering campus.

If arriving by car in the Gaven St. white zone, the student will be dropped off at the stop sign on Gaven at Boylston. (Students in other grades may be dropped off at the point at the western end of the white zone).

For 7-8th grade families arriving at Tunnel Ave., we suggest using the Candlestick/Tunnel Ave exit off Route 101. Then take Beatty Ave and turn right onto Tunnel Ave so that you may safely drop off your student(s) at the gated entrance. Please do not drop off students across the street or anywhere other than at the 333 Tunnel Ave. gate.

Caregivers should be masked and drive as far forward as possible. Students may not exit their vehicle until a staff member has confirmed that their health screen has been completed.

All staff and students will use hand sanitizer upon entering campus.

What will the pick up procedure be?

Dismissal will be staggered at the same gates assigned for drop off. Please be on time, remain masked, and stay physically distant from other community members to ensure separation of groups and their greatest safety.

If a family has kids at both Gaven St. and Tunnel Ave., will there be a way for parents to drop off and pick up both kids without one leaving early/ or getting there late?

Yes, we are working on a schedule that will allow for drop off and pick up at both locations.

Is carpooling permitted?

According to the [SFDPH](#), travel in a small, enclosed space without physical distancing may be associated with higher risk of COVID-19 transmission. If your child is not able to commute to and from school with other members of your household, carpool should be with as consistent and stable a group as possible. All persons within the vehicle should be masked at all times, and conditions permitting, windows should be open and outdoor ventilation maximized when feasible.

Will there be Extended Day?

Unfortunately no, there will not be morning or afternoon care in Stage 1 of our return to in-person learning.

DAILY ROUTINE

If a teacher is absent, who will substitute?

Whenever possible, another teacher from the cohort will substitute for the absent teacher. The School has hired several full-time substitute teachers who are present on campus each day to provide support and coverage where it is needed. If a substitute from within a cohort is not possible, one of the substitute teachers who is not assigned to a cohort may be called on.

There may be situations where a quarantining (but not ill) teacher may teach from home. We will always avoid additional new exposures to a cohort as much as possible.

How will specialists teach?

For art and music, specialists will do a combination of remote teaching, coming to students in classrooms, and teaching students in their respective specialist locations (e.g., art and music). When students participate in the art studio/music classroom, the room will be cleaned before a new class enters the space for use.

Health and Wellness/Physical Education will be conducted with masks and outdoors whenever possible.

Spanish classes will be held in students' assigned classrooms.

Students will engage in individual projects and can also collaborate in modified ways that are compliant with SFDPH guidelines. Health and Wellness/Physical Education activities will allow for engagement with masks on, either indoors or outdoors depending on space availability. Music will focus on learning activities that do not involve singing or wind instruments.

How is emotional health supported? Will there be additional meetings with the school counselor?

The School will partner with the staff and families to support students, especially during these times of unusual duress. The teachers also take active roles in leading and designing social and emotional curriculum and advisory programming. They work closely with Laura McGourty and Head of Upper School Nancy Nagramada to support students. The Upper School Counselor role is now a full-time one, and we are so glad we have increased capacity to support the upper school students and families.

How will lunch be handled?

Middle School students will bring their own lunch and water bottles.

6-8th Grade students will be seated 6 ft apart outdoors, weather permitting, during "listening lunches." With their masks off to eat, they will be discouraged from speaking. Podcasts or music will be available to listen to (or an educational video to watch). Once lunch is finished, students will put their masks back on, sanitize their hands, and then head out to recess to socialize and play.

If students are eating indoors due to weather or air quality, they will be seated 6 ft apart at their desks and follow the same guidelines as above for listening lunch.

Is there a modified plan for fire drills?

During a fire or other reason to evacuate campus, grade levels will follow the same path out of their classroom as they do during arrival times at the start of each day. Some grade levels will have designated locations on the Greentop as they have in the past and others will have routes to their designated campus gate and walk on the sidewalk to gain distance from campus.

When an elevated Air Quality Index (AQI) necessitates closed doors and windows, will it be safe for staff/students to be indoors? What about indoor ventilation?

The School's pre-COVID AQI Policy, drafted with the seasonal wildfires in mind, has been adapted for the circumstances created by the current pandemic. School closure will be considered at an AQI of >150 (instead of >200, as in the past) given the need to keep staff and children indoors and the inability to use natural ventilation.

Having said this, all classrooms on Gaven St. have HEPA filtration built into our HVAC system, which exceeds code requirement and provides an enhanced level of capture of small particles. In August, we tested outside air rates to confirm that the outside air exchange being delivered to all classrooms exceeds code and best practice standards.

At Tunnel Ave., there is an internal ventilation system which has an upgraded HEPA filter and three portable HEPA filters spread throughout the space, and we have 2 sets of doors to allow for cross ventilation for outdoor air circulation which will be open whenever possible.

How will teachers help students with their work during in-person independent work times?

Teachers will do their best to support students by using technology skills that we have used in SOTG. This could be using gSuite tools for immediate feedback or 1:1 gMeets using headphones in order to give individual help.

How will students work on group projects?

We will use virtual Fridays / SOTG as well as tech skills with the iPad to do collaborative work.

VIRTUAL LEARNING

What are we doing to support teachers and students who can't participate in in-person classes?

We have worked with our faculty to determine how their needs can be supported and how they can continue to have meaningful roles if they could not participate in person. We are thoughtfully integrating students into the classroom experience in meaningful ways (see below).

How many teachers have waivers due to their health and will not be teaching in-person?

Currently, we do not have any Middle School teachers who need to teach remotely. We will inform families if there is a change in status for any Middle School teacher.

For those who cannot be on campus for in-person learning, how will simultaneous distance learning work?

After piloting various software and devices to provide the best experience for those who cannot be on campus, the School has opted to use gMeet and multiple iPads to “bring in” the student engaged remotely and to allow them to have both a view of the teacher as well as a view of the class. The remote student will be paired with an in-person learner who will facilitate interactions. This approach was chosen for its greatest potential for including the student in classroom activities while learning from home as well as its technical simplicity.

How many children in each grade will continue to be online when in-person learning starts?

Currently there are two or three students in each grade who will remain in remote learning due to their needs. In addition, we anticipate that students and teachers may need to move in and out of remote learning given the requirement that students and adults stay home if they or anyone in their household has a symptom of COVID.

What happens if a student needs to stay home? Will that student be able to join virtually?

If the student is well enough to participate in school but has a temporary need to learn remotely (due to a positive health screen), the student may log into class in the same way a student who engages in only distance learning does. The student will use their iPad and will still be able to hear and participate in class. We will use email and GoogleClassroom as a way to pass materials to students. We want all students to be able to participate remotely with ease if they have to be away from campus, so we will continue to iterate on how we do this to support the best learning context possible.

Will we have an opportunity to switch to SOTG if our child is struggling with in-person learning?

We will remain in open communication with families if a student is struggling with in-person learning and strategize together around what would best support their learning.

VIRTUAL FRIDAY for 6th Grade

Can we integrate socialization/small group projects over gMeet on the remote Friday?

Yes, this is the plan.

In this model, how do you keep virtual Fridays from being a day off from learning?

There will be a clear schedule for learning for the day as well as cross-grade electives.

What is the benefit of distance learning on Friday for 6th grade? What is the benefit of the SOTG week for 7th and 8th grades?

We intend to leverage the benefits we've acquired from five months of remote teaching and learning, such as opportunities for 1:1 help, group dialogue where students can easily hear and see one another's expressions, and more intimate small-group work to support differentiation. For our staff and students, this is one day fewer for 6th Grade and five days fewer for 7th and 8th Grade of significant exposure without sacrificing learning.

How will we transition to *School on the Go* if necessary?

At times it may be necessary to revert to distance learning, e.g., when a grade needs to quarantine, if COVID cases increase within San Francisco County, or if multiple COVID cases are diagnosed in the school community. Transition to or from *School on the Go* is grade and program dependent. There may be a brief period of asynchronous learning, or in some classes with more complex circumstances or involved lesson plans, up to three days.

If toggling between distance and in-person learning becomes frequent and disruptive, the School may decide to remain in *School on the Go* until conditions stabilize.

6th GRADE SPECIFIC FAQS

How many modular classrooms are there, and what are their capacity? Also, will these student groups always be together?

There are two modulators, and each holds up to 18 students and 2 teachers. We have placed students in two groups, Blue and Green, and each is assigned a modular classroom. They will stay in these groups until the winter break. We likely will shift the groupings in January, as we have done in the past.

Are there windows in the modular classrooms?

There are two sets of windows on each side of the modulators and the door will remain open whenever possible. There is also a system built-in fan to circulate external air into the room and a portable HEPA filter.

8th GRADE SPECIFIC FAQS

Is it possible to have 8th grade return to campus before 7th grade?

We appreciate this question and are considering this idea when we enter Stage 2. Since this is their last year at SFS, our hope is to have the 8th Graders on site at Gaven St.

Will all of the 8th grade teachers be on campus teaching 8th grade students at Tunnel Ave. or Gaven St. or will they be remote?

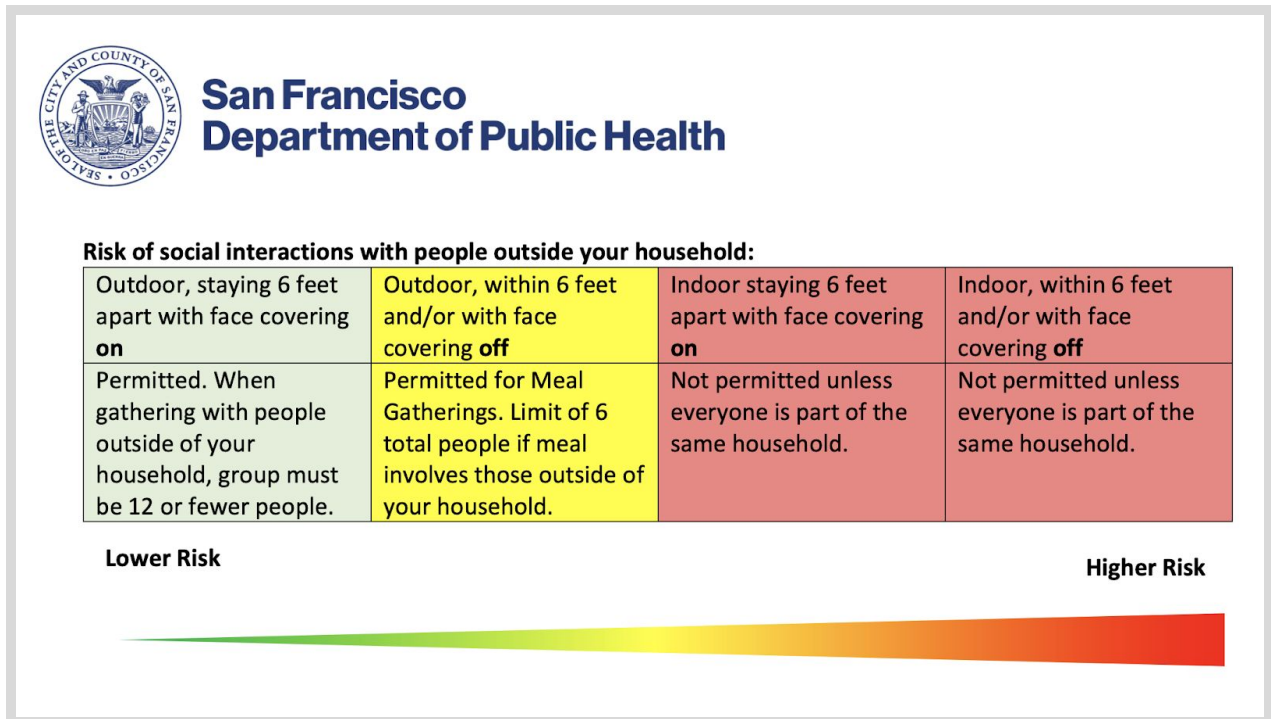
When 7th and 8th graders are in person at Tunnel Ave., all of their teachers will be in person with them.

Can community members socialize outside of school?

If staff and family members observe the SFPDH guidelines for safer interactions and avoid higher risk behaviors, limited socializing outside of school is permitted. ([SFPDH Tips for Safer Social Interactions](#) and [Tips and FAQs for Gatherings](#)). Safer interactions include the use of masks, physical distance, and small gatherings outdoors, with handwashing or hand sanitizing when appropriate.

Please consider the “Risk of social interactions with people outside your household” from the SFPDH Tips for Safer Social Interactions:

Figure 2. Risk of social interactions with people outside your household, SFPDH Tips for Safer Social Interactions



Larger gatherings incur greater risk. Indoor gatherings are higher risk and therefore not permitted, even with masks. Until the SFPDH alters its policy, the School encourages cohorts, grades, and affinity groups to continue gathering socially online for the time being.

Are indoor playdates and sleepovers permitted?

Community members should refrain from participating in indoor playdates or sleepovers. They do not adhere to the SFPDH guidelines (see previous question and Figure 1), and therefore, they are not in accordance with the Social Contract.

Are extracurricular activities permitted?

Yes. As long as the organization that provides the group activity (known as “Out of School Time Programs”) adheres to the [SFDPH Out of School Time Directive](#), SFS students may participate in them. However, there SFDPH limits participation to one program at a time (e.g., students may not participate in one activity on Mondays, Wednesdays, Fridays, and another on Tuesday and Thursday).

Will the Social Contract be reassessed for fall/winter break, especially if the City’s case numbers are low and masks are mandated for travel?

The Reopening Task Force is addressing the issue of upcoming breaks and whether SFS modifies its program to address concerns regarding travel and gatherings during the longer breaks. We urge our families and staff to follow our Social Contract for the benefit of all. As guidelines change as a result of SF County’s yellow tier status, we will update you on changes in protocols and the Social Contract.

How will the COVID-19 Social Contract be enforced?

The shared values of our School oblige our community members to work together to safeguard all of our well being--physically as well as mentally. We must be committed to each other as we collectively enter this new phase of reopening.

Signing the Social Contract represents your commitment to its tenets, which are based on the SF County Health Order and SFDPH guidelines for childcare, K-8th grade schools, and the public. We do not intend to (nor could we) police the actions of our community members. However, if the School is aware of a serious breach or repeated disregard of the contract, SFS will take administrative action which may include withholding a student’s or staff member’s access to in-person learning or teaching.

Is there a reporting system for violations of the Social Contract?

The Social Contract calls on each of us to be kind, attentive, and helpful to anyone around who may be in need of support in following safety health practices; to provide respectful and gentle safety reminders and suggestions to those who may need them; and respond graciously when others provide them.

If you have concerns about community engagement with the Social Contract, we encourage supportive conversations with families directly with one another. If you have questions or concerns that cannot be addressed through direct communication, please reach out to the School Nurse and your child’s division head.