

THE GAVEN STREET

FALL 2021

GAZETTE

THE SAN FRANCISCO SCHOOL MAGAZINE





The San Francisco School

cultivates and celebrates the intellectual, imaginative, and humanitarian promise of each student in a community that practices mutual respect, embraces diversity, and inspires a passion for learning.



IN THIS ISSUE

- 4 LETTER FROM STEVE
- 5 STRATEGIC PLAN: INITIATIVES IN ACTION
- 9 FORGE OUR FUTURE
- 14 2020-2021 ANNUAL REPORT
- 24 FUND FOR SFS
- 26 SFS GRADUATES
- 29 HERE'S THE SCOOP
- 30 COMMUNITY NEWS

The Gaven Street Gazette is published twice annually by the Office of Advancement of The San Francisco School. We always welcome feedback and story ideas through this email address: advancement@sfschool.org.

Accreditation and Membership

The San Francisco School is accredited by the California Association of Independent Schools (CAIS) and is a member of the National Association of Independent Schools (NAIS).

Photo credits: Rachel Benson, Nico Berry, Jeanie Chang, Stewart Dorsey, Mark Johann, Jenn Keese-Powell, Mugsy Clicks, Sharon Ng, Carly Reiter

Illustrations: Giselle Chow

ON THE COVER: 8th Graders Ella and Frannie making music with conductive circuits

INSIDE COVER: 7th Graders on the San Francisco Crosstown Trail, making a farewell trek from the Tunnel Ave. campus to Gaven St.

LETTER FROM STEVE



I love tradition. During my childhood in western Pennsylvania, tradition meant gatherings of family and friends and talking lots of story. If I was really lucky, we had a day off from school for something that only small towns like mine celebrated, such as opening day for deer hunting season. Though deer hunting was not a tradition in my family, I can't lie, I always enjoyed the day off at home!

Tradition at SFS has been put to the test by COVID. I am proud that we have stayed rooted in our traditions while putting a new spin on them. When the pandemic began, staff delivered mud pies to SFS students at home. Graduation speeches were made in-person, outdoors and physically distanced for each member of the Class of 2020. Last spring, instead of a schoolwide 8th Grade Concert, students performed live for an intimate group of staff, and the recording was shared with their families. This year, to reduce the student density, we held our Opening Ceremony outdoors on the green top — twice. Red banners, gongs, water pouring, and the Earth Day Rap — first for the even-numbered grades, and then for the odd.

This reflects the maturation of SFS, which is celebrating its 55th anniversary this year. Our values and identity are strong, and, at the same time, our progressive,

growth mindset has allowed us to imagine, iterate, and reinvent. As you'll see in these pages, there is curiosity, wonder, and smiles in the eyes of our masked staff and students because the School has evolved while remaining a joyful place of learning.

This year, I am focused on reconnecting with alumni and reliving our traditions with them. To share how SFS impacted their experiences and perspectives, we introduce "Here's the Scoop: Mud Pies with SFS Alumni," my new series of alumni interviews. I had so much fun catching up with Chad Williams '90 and Paul Gross '11, and I cannot wait to connect with more of you! Reach out if you are interested or would like to suggest an alum to be interviewed.

SFS was built on its traditions, and despite global hardships, we continue to thrive. This is the result of the time, talent, and treasure generously given by our community. As the Head of School, I have had to figure out how to lead the school, but I have never questioned whether there would be a school to lead. We have had the privilege of providing an incredible educational experience during this turbulent time when so many others could not.

Your generosity makes this possible, and I am forever grateful.

STEVE MORRIS
Head of School

STRATEGIC PLAN: INITIATIVES IN ACTION

When it was designed, our *Strategic Plan 2017-2022, Fulfilling Our Humanitarian Promise*, was intended to serve as a compass. The School has relied on the Strategic Plan to help navigate these last few years — including the past year and a half of COVID-19. The initiatives in the plan were designed “to safeguard the diverse and inclusive community of SFS, to enrich accessibility for families, and to deepen our experiences with diversity, equity, inclusion, and social justice both on and off our campus.” As we approach the end of this five-year period, we are proud of the progress the School has made in these initiatives, despite the pandemic, that prioritized the people of SFS — students, families, staff, and neighbors.

PEOPLE // Reimagination of Time and Communication

Time Redesign/Schedule/C&P. During the 2017-2018 school year, the teaching and administrative staff performed an in-depth, student-focused analysis of the daily schedule with the intention of advancing our educational program while meeting the practical needs of our diverse families and staff. The joys and challenges of the school day were experienced through staff shadowing students of every age, from arrival to dismissal. Family members were interviewed about the demands of their daily schedules. Updated pedagogy was integrated as the schedule was reimaged.

The result is a schedule that facilitates more connections between students and their teachers within a grade; greater differentiation; opportunities for multi-age interactions; and an intentional approach to social-emotional development. For instance, in the Preschool, there is more support for early reading and phonics instruction, social-emotional learning (SEL) teaching, and opportunities to teach STEAM in the play yard. With the recent campus renovations involving the Kindergarten and 1st Grades (see the Spring/Summer 2021 Gaven St. Gazette, “Kindergarten Moves Up to Elementary”), the transition from Preschool to Elementary School is facilitated with better continuity in the physical space as well as the program. For Elementary and Middle School students, the revised schedule allows longer blocks of time for deeper exploration of subjects;

LIVING OUR HUMANITARIAN



more off-campus learning through field trips and other special activities; opportunities for teamwork, cooperation, compassion, and problem solving through cross-grade programs; and seeing throughlines in the multidisciplinary lessons.

The new schedule also allows for more efficient use of staff time, which creates more opportunities for collaboration. Teachers within a grade, division, or department have scheduled opportunities to come together to plan. With more opportunities for connection, staff members are able to create stronger curriculum alignment, which provides more continuity from year to year as well as intersections between disciplines. And teaching staff are better able to teach and learn from each other.

One consequence of the reimagination process was the development of the Curriculum and Program Team (fondly referred to as the C&P), which includes Division Heads Kate McElvaney (Lower School), Stewart Dorsey (Upper Elementary), and Nancy Nagramada (Middle School), and Director of Design, Engineering, and Technology Carly Reiter. This group, with its diverse perspectives, talents, and experiences, was the tour de force behind the School's nimble conversion to distance learning in response to the pandemic, and they continue to fuse the Preschool-8th Grade program, ensuring it addresses the needs of students, staff, and families; the SFS educational philosophy, mission, and strategic plan; and of course COVID risk-mitigation strategies.

INITIATIVES IN ACTION



PLACE // Deepened Partnership with San Francisco and the Portola District

Summer Together. Though The San Francisco School's Gaven Street and temporary Tunnel Avenue campuses were open for much of the 2020-21 school year, many children in the Portola and surrounding neighborhoods were not able to return to their classrooms. When summer approached with few enrichment opportunities for families in highest need, SFS partnered with local community organizations and city departments to offer free in-person learning experiences for San Francisco Unified School District (SFUSD) students.

With limited space in the City's Recreation and Parks Department camps, the Department of Children, Youth, and Their Families matched 2,500 students with free private summer camps, including ours. In its inaugural year, the Summer Together Initiative prioritized families experiencing homelessness, children and youth in foster care, English language learners, and low-income families with a focus on historically impacted communities.

SFS was delighted to welcome eight Summer Together campers, ages 7-12, to three of its programs. "We really got to know the students, and they became wonderful members of our community," remarked SFS Director of Special Programs Sharon Ng. "We got so much out of having new students and new energy." She observed campers forging new friendships with other campers, junior counselors, and adult instructors. "It was a transcendent experience for the Summer Together children as well as for the SFS students and staff."

The SFS summer programs were hosted at the Tunnel Avenue location while construction closed the Gaven Street campus. Students from neighboring Little Hollywood and Visitacion Valley joined SFS students in Citizen Girl with its focus on crafting, outdoor adventure, service, and activism; mural artist and SFS Parent Nico Berry's Spray Can Summer; and Skateboard Camp with SF Skate Club. The SFS kitchen staff provided a daily lunch for all campers. "The camps were fun," said Summer Together camper LaDontae, age 10. "I had permission to spray paint and skateboard all the time, which was cool. I loved the lunches and enjoyed meeting artists in the Mission. I hope to see you guys next year, because I live close by!"





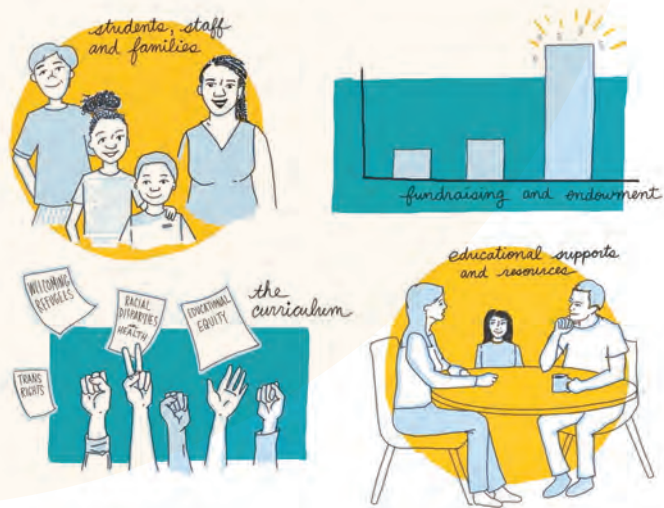
PEOPLE // Lifelong Learning Initiative for Staff

Summer Professional Development. Summer is traditionally an opportunity for teaching staff to recuperate from the academic year and engage in their own learning. After a particularly grueling year, many teachers were excited to develop new educational programs, especially with the receding threat of the pandemic and the hope of fewer health and safety restrictions in 2021-22. From Preschool teams to the Spanish department and an engineering cohort, it was an active time for professional development, individual projects, and collaboration. Just a few examples:

- » In collaboration with other Bay Area school leaders, Head of Lower School Kate McElvaney organized a workshop with Cathy Fosnot, a prominent leader in math education and creator of Contexts for Learning Mathematics, the curriculum used in grades K-5. The workshop was attended by independent school educators throughout the region.
- » Knowing Technologies, our longstanding partner in instructional technology coaching, conducted teacher camps, building on their pre-COVID foundation of tech knowledge and their toolbox of digital skills.
- » Arts and Science retreats in Sebastopol and Sonoma, respectively, allowed for bonding among colleagues, refinement of the program scope and sequence, and creative thinking about opportunities for curriculum alignment. The faculty danced, played, shared stories from the past and visions of the future, thought deeply about their work, and developed a shared sense of purpose.
- » The Preschool to 8th Grade teachers from various disciplines joined the Creative Engineering Cohort to explore engineering and devise ways to integrate it into the classroom and curriculum.

These programs were not limited to pedagogy and professional knowledge. After a year of teaching in relative isolation due to COVID restrictions, these workshops and retreats were a chance to build and strengthen relationships. Lower School Art Teacher Tiphani Russell has been teaching at SFS for more than a decade, but after spending time with visual and performing arts colleagues on their retreat, she felt she got to know them in a deeper way. "We're even more of a team now."

INITIATIVES IN ACTION



Early in the implementation of the Strategic Plan, in order to achieve the ambitious goals of *Fulfilling Our Humanitarian Promise*, SFS began working to develop a campaign to address two of the major initiatives that would require significant philanthropic support: “Empathy in the Age of Acceleration” and “Building the Endowment.”

The “Empathy in the Age of Acceleration” initiative called on us to deepen and expand the STEAM curriculum (Science, Technology, Engineering, Arts, and Math), strengthen the math curriculum, introduce age-appropriate technology, and integrate STEAM across all disciplines.

“Building the Endowment” called on us to grow the endowment to secure the School’s long-term financial health and safeguard our priorities by getting closer to the recommended benchmark of one year of tuition revenue.

The result was a bold vision to strengthen our commitment to people, place, and program that honors the School’s mission and values while rising to the challenge of demographic, technological, and pedagogical changes.

PEOPLE // Building the Endowment PROGRAM // Empathy in the Age of Acceleration



forge our future

THE CAMPAIGN FOR SFS





Forge Our Future: The Campaign for SFS represented an essential investment in the success of our students and strength of our school. **Thanks to the enthusiasm and commitment of our community, we exceeded our \$6.5 million goal, raising \$7 million in gifts, pledges, and anticipated matching gifts.** The incredible success of the campaign, made possible by the deep commitment and generosity of our community members, has moved the school forward while preserving what we value most.

Because of this tremendous support, we were able to move forward without delay to build STEAM spaces and capacity. Prior to and in the midst of the pandemic, SFS invested in technology, professional development, and new curriculum, enhanced and equipped the Workshop to enable increased engineering and tinkering, and built the outdoor Field Station. This past summer, campus renovations created the Learning Commons, a reimagined library and hub for literacy, digital media, and community engagement, as well as a new, safer Front Office and new 1st grade classroom.

The campaign has both immediate and long-term effects on students at SFS. Of the funds raised, \$4.5 million are earmarked for the endowment, effectively doubling its value. Already, \$1.8 million have been added to the endowment this fall, all of it in socially responsible investments, with pledges receivable to be added over the next four years.

The increased endowment helps us to maintain the accessibility of our school to a diverse student body by bolstering our tuition assistance program. It will also allow the School to **recruit and retain excellent teachers** by providing competitive salaries and benefits. And lastly, it helps **safeguard the School's financial future**, ensuring we can weather the unexpected.



Special thanks to the Campaign Steering Committee and Campaign Ambassadors for their dedication to making the vision a reality.

Campaign Steering Committee:

Samantha Campbell, Co-Chair
Mike Lee, Co-Chair
Rachel Benson
Lora Blum
Deborah Yeh

Campaign Ambassadors:

Mike Demmer
Paige Duffer
Phil Farhi
Scott Gelin
Asha Gohil
Jessica Lindl
John Palmer
Amy Thompson
Libby Reder
Dave Whitelaw
Sarah Whitelaw



The core of The San Francisco School has always been its community. We are grateful to the many trustees, parents, guardians, grandparents, staff, former staff, alumni parents, and alumni who invested in and endorsed the mission through this campaign. Your support helps SFS to fulfill our humanitarian promise.

WITH APPRECIATION FOR THE FOLLOWING DONORS

PARENTS & GUARDIANS

Ben and Amy Alamar
 Poppy Alexander and Ben Schrom
 Alain Algazi and Gail Shibata
 Ben Ancock and Pamela Vig ❖
 Jessica and Charles Anderson
 Chika Ando
 Roberto Angulo and Ana Bertran
 Josh Anish ❖
 Anonymous, many
 Shota Aoyagi and Jungeun Lee
 Rahul and Sharvari Apte
 Adam Arkin and Debra Safer
 Amy Baker and Tom Stevenson
 Lalitha and Anirban Bardalaye
 The Bardwick-McGlone Family 🌸
 Tom and Erin Becker ❖
 Melinda, David, and Carter Benson ❖
 Mark and Jenny Bernstein
 Shveta Berry and Arjun Dutt ❖
 Veronica Blackwell and Michael Johnson
 Nisha and Asheesh Birla
 Steve Bissinger and Taara Hoffman ❖
 Lora Blum and Steve Cooper ❖
 Benjamin Brown and Rachel Been
 Dana Burd and Jeanie Chang ❖
 Sheila Cahill and Fro Rosqueta
 Chandra and Christopher Campbell
 Samantha Campbell ❖
 Joseph Chau and Linh Ly
 Ellen Chen and Sanjeev Datar ❖
 Roberta and Jerry Chiu
 Mark and Rebecca Clendenin ❖
 Lynn Connolly and José de la Torre
 Matt and Meghan Davidson
 Amy Davis and Vish Makhijani
 Christine Dehlendorf and Matt Lever
 Michael Demmer and Rachel Benson ❖
 Thor and Hannah Denmark 🌸
 Stefano DeZerega and
 Johanna Hartwig 🌸
 Albert and Cassandra Dixon
 Caroline and Michael Donohue ❖
 John Dorsey and Heather Sullens
 Stewart Dorsey and Karla Mei Robertson ❖
 The Duff Family

David Edeli '91 and Mandy McAnally
 The Estrada Family
 Jen Faenza and Villi Ilchev
 Janell Fischer and Liz Steinfield ❖
 Daniel and Priscilla Flores 🌸
 Monica Gandhi, in honor of
 Rakesh Mishra 🌸
 Rick Garcia and Jenny Garboden
 Andy Gass and Jenny Wilson
 Ali Gass and Alec Hathaway
 Scott Gelin and Joanna Sargalska-Gelin
 Gentzler-Takeuchi Family 🌸
 Megan and Ted Getten
 Beth, Kelly, and Juniper Gillis
 Suzanne Ginsburg and Lee Jacobek ❖
 Michael Glaser and Kristine Hernandez ❖
 Joey Goldman and Brad Williston ❖
 Charles Golling and Dina Greenwald Golling
 The Goodman Family
 Aaron and Michelle Gordon
 Grace and Brad Goya
 Mitch Grasso and Tracy Nasse ❖
 Nestor Hernandez and
 Alexandra de Ledebur
 Steve Holman and Lamisse Droubi 🌸
 Melissa and Paul Holman-Kursky ❖
 Anton Honikman and Jessica Lindl ❖
 David Howard and An Ly
 The Hutchinson Family ❖
 Ivan Iannoli and Thea Anderson '90 ❖
 Patrick and Danielle Jackson
 Maneesh Jain and Nadya Ramsaroop 🌸
 Diana and Daniel Jansson
 Jonathan and Tracy Kaplan ❖
 The Keese-Powell Family ❖
 The Klasen Family
 Nate Koechley and Aimee Bell ❖
 Crissy and Joerg Koehler
 Sumit and Mala Kohli
 Michael S Kwun and
 Sigrid Anderson-Kwun ❖
 Ben and Betsy Lee
 Lance and Irene Lee 🌸
 Michael Lee and Amy Bricker 🌸
 Nikolai Leung and Anita Chawla
 Jieneng Li and Xiuting Liang

Anne and Tony Lopez 🌸
 Justin Lovett and Margaret Backstrom
 Bruce and Marti Maes ❖
 Deborah McCrimmon and Aaron Johnson
 Paul McGrath
 Robyn McGrath
 The Manzo McNeel Family
 Chris and Lyrica McTiernan
 Charlie Meade and Emily Gillingham 🌸
 The Messgortins
 Rebecca Misner and Alex Grossman
 David and Ana Mitchell
 The Miyaki Family
 Peter Monks and Nisha Nanda ❖
 Jacquelyn Moorad and Carolyn Hsu
 Steve Morris and Beth Goya-Morris ▲
 Daniel and Rebecca Munda ❖
 The Muratovic Family
 Nancy Nagramada and Charles Raymond
 Yume Nguyen and Umang Mehta ❖
 Neelam Noorani and Noman Rangwala ❖
 Kim and Jon Oakes ❖
 Familia Ornelas Acosta
 John and Neha Palmer ❖
 Karen Park and Peter Lorentzen
 The Paves Family ❖
 Ellen Perelman 🌸
 Erika and Snuller Price ❖
 Kai Quinto and Kathy Huibonhoa
 Shannon Range and Laura Post ❖
 Mehul Rawal and Asha Gohil ❖
 The Ray Family
 Libby Reder and Phil Farhi
 Rudy Reyes and Brody Lee ❖
 Mark Risher and Deborah Yeh ❖
 Nina Rosenberg and Bruno Connelly ❖
 David and Erin Russell
 Kate Ryan
 Marcus and Julia Ryu
 Rohit and Darpun Sachdev ❖
 The Scheinker Family ❖
 Sarah Schoellkopf and William Neil
 Dan Scholnick and Deepa Subramanian
 Lindsey Scrase and Theresa Hagel
 Cameron Sellers
 Nick Shalek and Christine Luby

Prashant Sharma and Priya Bhatia
 Amrita and Prashant Shastri
 Divya and Benjamin Silbermann ❖
 Cyrena Torrey Simons
 Baljeet Singh and Raveena Rihal ❖
 Mandira Singh and Dan Stanko
 Michael Siou and Polly Arenberg ❖
 Andrew Slakoff and Nicole Wolff ❖
 Matthew Smith and Judy Miu
 Ruth Sofaer-Morse and Tyler Morse
 Chris Stori and Kelly Hayashi
 Yee-Li Sun and Susy Jeng
 Neeta Takhar and Sid Lakireddy
 Matt Theobald and Sarah Chandler
 Walker and Amy Thompson
 Jessica Tomlinson and Jen Taylor ❖
 Kendrick Vaughn
 Carole Vigne and Amir Baseri
 Kiernan Warble and Mike Romano 🌸
 Serena Warner and David Rothschild
 David and Sarah Whitelaw ❖
 Orin and Alice Wicks
 Nathan Wilson and Patrice Martin
 Anne Wintroub and Alex Hansen
 Keith Wolff and
 Amelia Zimmermann Wolff ❖
 Shigeko Yamaguchi
 The Yepez Family ❖
 Emre Yilmaz and Caroline Smith
 Nicolette Zarday and Geoffrey Dolan

TRUSTEES

Thea Anderson '90 ❖
 Dimitri Barton '08
 Rachel Benson ❖
 William Duff
 Josué Estrada
 Asha Gohil ❖
 James Harding 🌸
 Ben Mangan
 Steve Morris ▲
 Adam Oberweiser '82 🌸
 John Palmer ❖
 Snuller Price ❖
 Libby Reder
 Julia Russell Eells
 Baljeet Singh ❖
 Liz Steinfield ❖
 Kendrick Vaughn
 David Whitelaw ❖
 Keith Wolff ❖
 Michelle Yi Martin 🌸
 Mina Zargham '03 ❖

STAFF

Dimitri Barton '08
 Jenny Bernstein
 Stewart Dorsey ❖
 Dolores Elkin *

Jackie Ennis ❖
 Ellen Fey ▲
 James Harding 🌸
 Jennifer Keese-Powell ❖
 Sofia López-Ibor Aliño
 Steve Morris ▲
 Daniel Munda ❖
 Nancy Nagramada
 Corie Ng
 Corrine Olague ❖
 Laura Post ❖
 Carly Reiter
 Vivian Walz *
 Ed Waingortin
 Michelle Yi Martin 🌸

CURRENT STUDENTS & ALUMNI

Thea Anderson '90 ❖
 Dimitri Barton '08
 Anna Boyer '09 ❖
 Caroline Denmark '21
 Nadine Denmark '21
 Hudson Dorsey '28
 David Edeli '91
 Andrés Fuentes-Afflick '05
 Adam Oberweiser '82 ❖
 Mina Zargham '03 ❖

ALUMNI FAMILIES

Marian and Hans Baldauf ▲
 Bob and Janet Calhoun
 Kate Dyer and Ellen Fey ▲
 Kathie and Terry Edeli ❖
 Dolores Elkin and Joe Rubin *
 Ralph Forde and Mary Jean Koontz 🌸
 Terry Gamble and Peter Boyer ❖
 Carol Glanville
 Doug and Karen Goodkin ▲
 Ian Green and Cristiana Ceppas
 Barbara Koenig
 Rich and Nancy Levine ▲
 Linda and Alfred Louie ❖
 Michael Martin and Michelle Yi Martin 🌸
 Jeanette and Kevin Moore ❖
 Bob and Linda Mostovoy *
 Adam Oberweiser and Melissa Curran 🌸
 Corrine and Michael Olague ❖
 Anne and Tim Roberts
 Leslie Roffman and Bob Goodwin
 Bill Rusitzky and Cathy Manshel
 David Teitel and Helen Loeser
 Vivian Walz and Bob Dunlap *
 Jim Watson and Davida Desmond
 The Zargham Family

CURRENT & FORMER GRANDPARENTS

Carter Benson Sr.
 Kathie and Terry Edeli ❖
 Jeannine and Alain Farhi
 William and Nancy Heaslip
 Carole Holman
 Jonathan Holman
 Kathleen Janger ❖
 Tom & Carole Keese
 Janice and Manny Kursky
 Peggie O'Neal
 Susan and Robert Post
 Ann and Barry Reder
 Leslie Roffman and Bob Goodwin
 Philip and Judy Ryan ❖
 Edward Williston
 Jean & Lew Wolff

FORMER STAFF

Terry Edeli ❖
 Doug and Karen Goodkin ▲
 Melissa Holman-Kursky ❖
 Linda Louie ❖
 Charlie Meade *
 Jeanette Moore ❖
 Bethany Paves ❖
 Steve Rubin ❖

FRIENDS

Ben Mangan and Wileen Chan
 Steve and Devon Rubin ❖
 Julia Russell Eells and John Eells

ORGANIZATIONS

Abraham Kaplan Charitable Foundation
 Apple 🌸
 Autodesk ❖
 BlackRock ❖
 The Campbell Foundation ❖
 Chevron Corporation ▲
 Cisco Foundation
 Eugene M. Lang Foundation ❖
 Genentech, Inc.
 Google Inc. ❖
 Intuit 🌸
 Jean & Lewis Wolff Family Foundation
 LinkedIn ❖
 Qualcomm Foundation
 Salesforce Foundation ❖
 Thermo Fisher
 Twitter
 Verizon
 Visa
 The Walt Disney Company Foundation

❖ 5 Year Consecutive Donors
 🌸 10 Year Consecutive Donors
 ▲ 15 Year Consecutive Donors

* 20 Year Consecutive Donors
 ❖ 25 Year Consecutive Donors

ANNUAL REPORT



Dear SFS Families and Friends,

The 2020-21 school year was like no other, yet the SFS community rallied in ways not imagined pre-COVID. In the midst of the many challenges of simply executing our program and maintaining our traditions, our faculty, staff, parents, and guardians continued to advance new initiatives and priorities.

The Family Association (FA), led by FA Chair Neeta Takhar and Past Chair Sapna Gupta, helped families stay connected while continuing to grow in the midst of the pandemic. The FA hosted community-building events such as virtual Trivia Nights and holiday celebrations where families gathered on GMeet. It launched an Environmental Committee in response to guest speaker Chip Fletcher's alarming SPEAK presentation, integrated heritage celebrations and affinity groups into the Association, and provided a forum for parents and guardians to have meaningful conversations around race.

Talk about growth! Our teachers and administrators expanded their skills and mindsets in ways they never imagined. Hosting school from a closet, a car, a parking lot, or nearby Palega and McLaren Parks... creativity and resiliency abounded. They not only delivered a program that met the scope and sequence of the curriculum, but they took advantage of novel technology, used outdoor spaces to teach and challenge students, and provided social-emotional support for the children and each other.

Throughout this challenging time, the School was supported by the generosity of both spirit and philanthropy from our community. During so much uncertainty, these gifts allowed us to support our staff and families who needed assistance, and allowed us to not just get by, but to make SFS the best it could be. *The Fund for SFS* raised nearly \$800,000 in gifts and pledges from current and alumni families, past and present staff, and friends. Special thanks to the Advancement Committee and Trustees who served as champions for the Annual Fund.

And all of this was in the midst of a major capital campaign, *Forge Our Future*, highlighted on earlier pages. I can't sufficiently express, on behalf of the entire staff, how honored we feel to be so supported by this community and empowered to fulfill the School's mission. You put wind in our sails and reserves in the tank. Onward ho!

With tremendous gratitude,

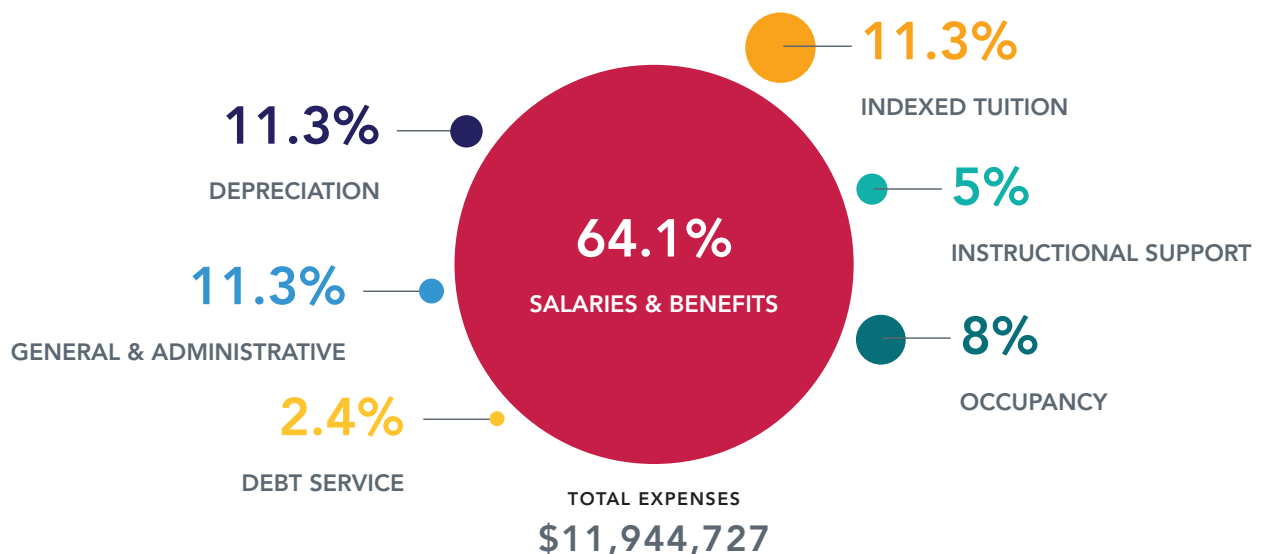
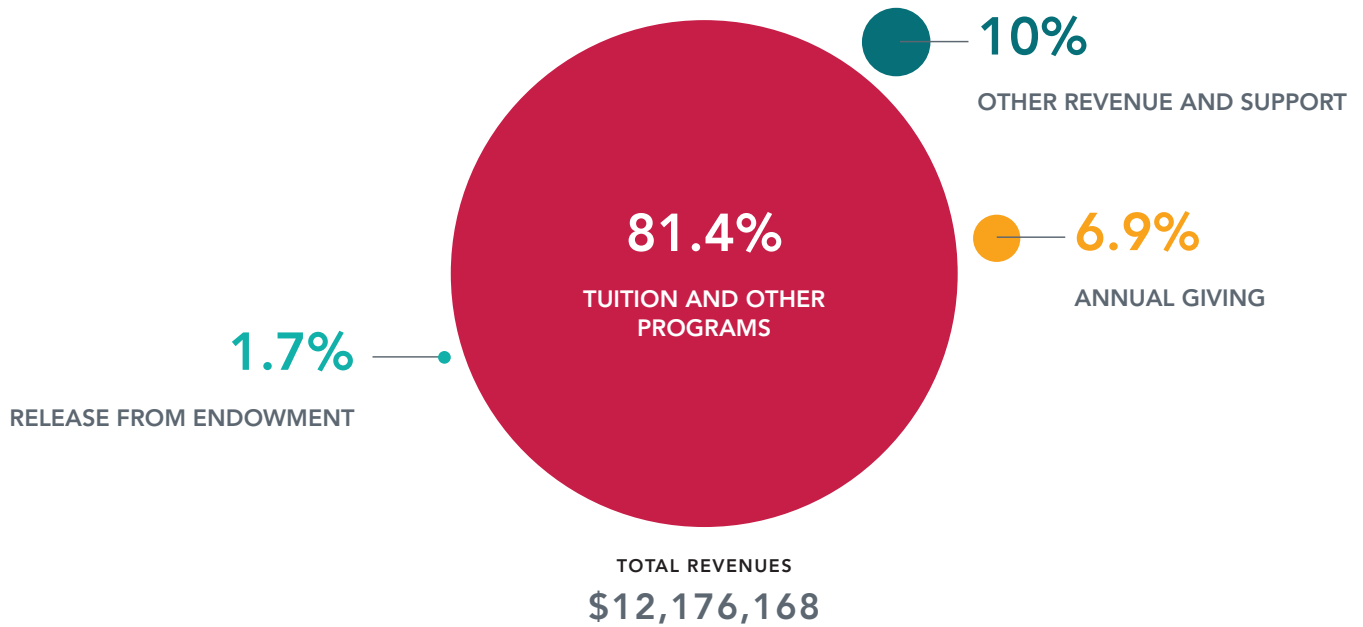
A handwritten signature in black ink, appearing to read 'Jen', written in a cursive style.

JENNIFER KEESE-POWELL
Director of Advancement

FINANCIAL REPORT*

ANNUAL GIVING		CAPITAL GIVING	
Annual Fund	\$ 799,997	Forge Our Future (gifts and pledges)	\$ 2,442,811
Tuition Assistance/Other	\$ 50,082	Endowment	\$ 3,458
Total Annual Giving	\$ 850,079	Total Capital Giving	\$ 2,446,269
TOTAL GIVING		\$ 3,296,348	

*Audited Financials



WITH APPRECIATION FOR THE FOLLOWING
DONORS TO THE ANNUAL FUND

PARENTS & GUARDIANS

Ben and Amy Alamar
 Alain Algazi and Gail Shibata
 Ben Ancock and Pamela Vig ❖
 Geoff Anders and Mary Rios
 Jessica and Charles Anderson
 Chika Ando
 Roberto Angulo and Ana Bertran
 Josh Anish ❖
 Anonymous
 Shota Aoyagi and Jungeun Lee
 Sharvari and Rahul Apte
 Adam Arkin and Debra Safer
 Anirban and Lalitha Bardalaye
 Dee Bardwick and Jennifer McGlone ❖
 Amir Baseri and Carole Vigne
 Tom and Erin Becker ❖
 David and Melinda Benson ❖
 Mark and Jenny Bernstein
 Nico Berry and Sarah Frisch ❖
 Michael Betts and Laura McGourty
 Stephen Bissinger and Taara Hoffman ❖
 Michael and Alison Brody ❖
 Benjamin Brown and Rachel Been
 Dana Burd and Jeanie Chang ❖
 Marcelo Camberos and Ana Zacapa ❖
 Samantha Campbell ❖
 Chandra and Christopher Campbell
 Brian Case
 Ian Celecia and Sharon Ng
 Julio Cerda-Gomez and Maryela Padilla
 Joseph Chau and Linh Ly
 Roberta and Jerry Chiu
 Mark and Rebecca Clendenin ❖
 Bruno Connelly and Nina Rosenberg ❖
 The Blum Cooper Family ❖
 Louis and Katya Cornejo
 Sanjeev Datar and Ellen Chen ❖
 Matt and Meghan Davidson
 Maggie Day and Roger Teich ❖
 José de la Torre and Lynn Connolly
 Christopher De Meo and Kristin Spilman ❖
 Christine Dehlendorf and Matt Lever
 Michael Demmer and Rachel Benson ❖
 Thor and Hannah Denmark ❖
 Stefano DeZerega and Johanna Hartwig ❖
 Albert and Cassandra Dixon

Christopher and Sarah Donahue
 Caroline and Michael Donohue ❖
 Stewart Dorsey and Karla Robertson ❖
 John Dorsey and Heather Sullens
 William Duff Jr. and Paige Patterson Duff
 Arjun Dutt and Shveta Berry ❖
 David Edeli '91 and Amanda McAnally
 Jennifer and Josué Estrada
 Philippe Farhi and Elizabeth Reder
 Daniel and Priscilla Flores ❖
 Mike and Brynn Flynn
 Rowena Fontanos and Kyle Rogers
 Richard and Marlene Ford ❖
 Monica Gandhi ❖
 Rick Garcia and Jenny Garboden
 Andy Gass and Jenny Wilson
 Scott Gelin and Joanna Sargalska-Gelin
 Seth Gentzler and Kara Takeuchi ❖
 Megan and Ted Getten
 Beth and Kelly Gillis
 Michael Glaser and Kristine Hernandez ❖
 Joey Goldman and Brad Williston ❖
 Michelle and Aaron Gordon
 Grace and Brad Goya
 Mitch Grasso and Tracy Nasse ❖
 Alex Grossman and Rebecca Misner
 Sapna Gupta
 Theresa Hagel and Lindsey Scrase
 Alec Hathaway and Alison Gass
 Nestor Hernandez and
 Alexandra de Ledebur
 Alison Hills and Kelly Klaus
 Steve Holman and Lamiisse Droubi ❖
 Melissa and Paul Holman-Kursky ❖
 Anton Honikman and Jessica Lindl ❖
 Nairi and Kirk Hourdajian ❖
 Jason Hughes and Kelly Iura ❖
 Daria and Jeff Hutchinson ❖
 Ivan Iannoli and Thea Anderson '90 ❖
 Villi Iltchev and Jen Faenza
 Danielle and Patrick Jackson
 Lee Jacobek and Suzanne Ginsburg ❖
 Ethan Jacobs and Shirin Keen
 Prasanna Jagannathan and Jaclyn Kuwada
 Maneesh Jain and Nadya Ramsaroop ❖
 Diana and Daniel Jansson

Aaron Johnson and Deborah McCrimmon
 Michael Johnson and Veronica Blackwell
 Kirk Jones and Brenda Ng ❖
 Jonathan and Tracy Kaplan ❖
 Edward and Christine Katzin ❖
 The Keese-Powell Family ❖
 Nilka and Maik Klases
 Nate Koechley and Aimee Bell ❖
 Crissy and Joerg Koehler
 Telly Koosis and Aimee Haeussler
 Simone Kriz and Timothy Chon ❖
 Michael Kwun and Sigrid Anderson-Kwun ❖
 Sidhardha Lakireddy and Neeta Takhar
 Alex Landaverde and Velsi Jara
 Scott Laughlin
 The Lance and Irene Lee Family ❖
 Michael Lee and Amy Bricker ❖
 Benjamin and Betsy Lee
 Joel and Elizabeth Leu ❖
 Nik Leung and Anita Chawla
 Chong Li and Xingxiu Zhen
 Jieneng Li and Xiuting Liang
 Manuel Lopez and Ruth Ramirez
 Tony and Anne Lopez ❖
 Peter Lorentzen and Karen Park
 Justin Lovett and Margaret Backstrom
 Raldon Lumpkins and Gaby Fusco
 An Ly and David Howard
 Marti and Bruce Maes ❖
 Vishal Makhijani and Amy Davis
 Paul McGrath
 Robyn McGrath
 Marlon and Kyoko McKenney
 David McNeel and Michelle Manzo
 Lyrica and Chris McTiernan
 Meade Gillingham Family ❖
 Umang Mehta and Yume Nguyen ❖
 David Mitchell and Ana Gonzalez
 Rebecca Mitchell and Ryan Beckland
 Judy Miu and Matt Smith
 Shawn Miyaki and Johanna Lopez
 Peter Monks and Nisha Nanda ❖
 Jacquelyn Moorad and Carolyn Hsu
 Steve Morris and Beth Goya-Morris ▲
 Daniel and Rebecca Munda ❖
 Lucija and Faruk Muratovic

❖ 5 Year Consecutive Donors ❖ 10 Year Consecutive Donors ▲ 15 Year Consecutive Donors ❖ 20 Year Consecutive Donors
 ❖ 25 Year Consecutive Donors

ANNUAL FUND

PARENTS & GUARDIANS, *continued*

Nancy Nagramada and Charles Raymond
 William Neil and Sarah Schoellkopf
 Kim and Jon Oakes ❖
 Andres Ornelas and Lorena Acosta
 John and Neha Palmer ❖
 Bethany and Michael Paves ❖
 Ellen Perelman *
 Erika and Snuller Price ❖
 Kai Quinto and Kathy Huibonhoa
 Shannon Range and Laura Post ❖
 Noman Rangwala and Neelam Noorani ❖
 Mehul Rawal and Asha Gohil ❖
 Michelle and Leonidis Ray
 Tomomi Rector and Reg Rector II
 Rudolph Reyes and Brody Lee ❖
 Matt Richtel and Meredith Barad
 Mark Risher and Deborah Yeh ❖
 Michael Romano and Kiernan Warble *
 David Rothschild and Serena Warner
 Toni Russell ❖
 Erin Russell and David Russell
 Tiphani Russell Johnson and
 Michael Johnson ❖
 Kate Ryan
 Rohit and Darpun Sachdev ❖

Jeffrey Sallot and Winston Vaughan
 Ande and Matte Scheinker ❖
 Danielle Schlosser
 Daniel Scholnick and Deepa Subramanian
 Benjamin Schrom and Poppy Alexander
 Danielle Scott and Ryan Goodman
 Cameron Sellers
 Nick Shalek and Christine Luby
 Prashant Sharma and Priya Bhatia
 Amrita and Prashant Shastri
 Jonathan Siegel and Sadie Wilcox
 Divya and Benjamin Silbermann ❖
 Cyrena Torrey Simons
 Baljeet Singh and Raveena Rihal ❖
 Michael Siou and Polly Arenberg ❖
 Andrew Slakoff and Nicole Wolff ❖
 Ruth Sofaer-Morse and Tyler Morse
 Jason and Andrea Spero *
 Matt Spitz and Lori Karns
 Eric Staller and Sietske Tjallignii
 Eugene Stampley and
 Michael C. Brock III ❖
 Dan Stanko and Mandira Singh
 Liz Steinfield and Janell Fischer ❖
 Tom Stephenson and Amy Baker

Chris Stori and Kelly Hayashi
 Yee-Li Sun and Susy Jeng
 Matthew Theobald and Sarah Chandler
 Amy and Walker Thompson
 Christopher Tobin and
 Josephine Taylor-Tobin
 Jessica Tomlinson and Jen Taylor ❖
 Molly Treadway '99 and Alex Campbell ❖
 Thang Truong and Isa Barth-Rogers
 Rosana Vantuyl
 Kendrick Vaughn
 Ed Waingortin and Barbara Messing
 David and Sarah Whitelaw ❖
 Orin and Alice Wicks
 Nathan Wilson and Patrice Martin
 Anne Wintroub and Alexander Hansen
 Keith Wolff and
 Amelia Zimmermann Wolff ❖
 Shigeiko Yamaguchi
 Ethan Yang and Ami Mi Wang
 Lisa and Roberto Yeppez ❖
 Emre Yilmaz and Caroline Smith
 Joe Youngs and Jessica Silvestro
 Wanda and Tym Zerr



TRUSTEES

Thea Anderson '90 ❖
 Dimitri Barton '08
 Rachel Benson ❖
 William Duff
 Josué Estrada
 Asha Gohil ❖
 Sapna Gupta
 James Harding *

Ben Mangan
 Steve Morris ▲
 Adam Oberweiser '82 *
 John Palmer ❖
 Snuller Price ❖
 Libby Reder
 Julia Russell Eells
 Baljeet Singh ❖

Liz Steinfield ❖
 Kendrick Vaughn
 David Whitelaw ❖
 Keith Wolff ❖
 Michelle Yi-Martin *
 Ana Zacapa ❖
 Mina Zargham '03 ❖

❖ 5 Year Consecutive Donors * 10 Year Consecutive Donors ▲ 15 Year Consecutive Donors * 20 Year Consecutive Donors
 * 25 Year Consecutive Donors

THANK YOU!

ANNUAL FUND

FACULTY & STAFF

Jalen Allen '08
 Ana Araya
 Christina Baum
 Jenny Bernstein
 Kimberly Burke
 Jeanie Chang ❖
 Maggie Day ❖
 Michelle De Leon ❖
 Liliana Dheer
 Melissa Doezema ❖
 Stewart Dorsey ❖
 Dolores Elkin *
 Jackie Ennis ❖
 Ellen Fey 15
 Tamara Foster

Gaby Fusco
 Terri Hamer
 James Harding ❖
 Diana Jang
 Jennifer Keese-Powell ❖
 Stacy and Wyman Lee *
 Erika Liedtke ❖
 Kate McElvaney
 Laura McGourty
 Steve Morris ▲
 Daniel Munda ❖
 Nancy Nagramada
 Corie Ng
 Sharon Ng
 Anne O'Driscoll

Corrine Olague *
 Vahlee Peters ▲
 Laura Post ❖
 Carly Reiter
 Toni Russell ❖
 Tiphani Russell Johnson ❖
 Paige Sandoz ❖
 Eugene Stampley ❖
 Molly Treadway '99 ❖
 Ed Waingortin
 Vivian Walz *
 Sadie Wilcox
 Michelle Yi-Martin *
 Jiazhen Zhang ❖



CURRENT STUDENTS & ALUMNI

Teddy Alamar '21
 Jalen Allen '08
 Thea Anderson '90 ❖
 Fritz Baldauf '16 ❖
 Liesl Baldauf '17 ❖
 Dimitri Barton '08
 Anna Boyer '09 ❖
 Caroline Denmark '21

Nadine Denmark '21
 David Edeli '91
 Anna Eley Cantrell '94
 Andres Fuentes-Afflick '05 ❖
 Daniel Gehr '06
 Sophie Hood
 Ginger Jackson-Gleich '99
 Gabriel Keese-Powell '19
 Marcus Lee

Manuel Nieto '93
 Adam Oberweiser '82 ❖
 Melissa Olague '04
 William Range '17
 Molly Rogers '97
 Molly Treadway '99 ❖
 Devanee Watkins '18
 Daniel Watson '05
 Mina Zargham '03 ❖

❖ 5 Year Consecutive Donors * 10 Year Consecutive Donors ▲ 15 Year Consecutive Donors * 20 Year Consecutive Donors
 ❖ 25 Year Consecutive Donors

ANNUAL FUND



ALUMNI FAMILIES

Tom and Carol Baker
 Marian and Hans Baldauf ▲
 Daniel Barton and Maica Folch ❖
 Marie Bergstedt *
 George Borges ▲
 Robert Burkhead and Gloria Lau *
 Eduardo Cabrera and Raissa Williams *
 Robert and Janet Calhoun
 Sam Chase and Jane Wattenberg ❖
 Rusa Chiu and Reb Anderson
 Tim and Lemlem Chupein
 Jason Coffey and Cecilia Chang
 Ramona Davies
 Stephen Dilly and Lynette Mullens ❖
 Robert Dunlap and Vivian Walz *
 Kate Dyer and Ellen Fey ▲
 Terry and Kathie Edeli *
 Dolores Elkin and Joe Rubin *
 Linda Erkelens ▲
 Robert and Carol Feng ❖
 Ralph Forde and Mary Jean Koontz *
 Tamara Foster
 Harald Frohlich and Thomas Satterwhite

Elena Fuentes-Afflick and
 Peter Fuentes-Afflick ❖
 Terry Gamble Boyer and Peter Boyer *
 Doug and Karen Goodkin ▲
 Carla and Johnny Greene ❖
 Ron and Gloria Greenwald
 Maria Hekker and Jeff Tice *
 Tod Hing and Maria Yap
 Pat Jackson and Dan Gleich *
 Barbara Koenig
 Frank Lalle and Susan Schwartz *
 Stacy and Wyman Lee *
 Peter Leung and Cindy Kwan-Leung
 Rich and Nancy Levine ▲
 Erika Liedtke ❖
 Harris and Jane Loeser
 Linda and Alfred Louie *
 Tom Meyer and Julie Stevenson *
 Bob Moog and Ursula Bendixen
 Jeanette and Kevin Moore ❖
 Robert Mostovoy and
 Linda Kaplan Mostovoy *
 Adam Oberweiser and Melissa Curran *

Corrine and Michael Olague *
 Drew Parker-Rose and Flavio Epstein ▲
 Wendy Parkman and John Rogers
 John Pepin and Karen Bisgeier *
 Vahlee Peters and Greg Wright ▲
 Miriam Phillips and Charles Eley *
 Maria Pracale
 Andrea Reed *
 Deedra Robinson-Watkins
 Leslie Roffman and Bob Goodwin
 James and Gretchen Sandler ▲
 Paul and Anne Scherer
 Rajan Sharma and Michele Sharma ▲
 Erich and Deborah Stratmann
 David Teitel and Helen Loeser
 Lynn Thompson
 Victoria Vasey and Byron Bias *
 Bernard Weiner and Heide Linsmayer *
 Betsy Wolkin and Michael Gaines ❖
 Michelle Yi-Martin and Mike Martin *
 Christine and Clifford Yin ▲
 Bo Zawadsky and Constance Clark *

CURRENT & FORMER GRANDPARENTS

Tom and Julie Baker
 Jeffrey and Janis Bautista
 Kathy Bissinger ❖
 Rusa Chiu and Reb Anderson
 Joseph and Dianne Clendenin ❖
 Laura and Richard Davis
 David and Sara DeZerega
 Mufeed and Pamela Droubi
 Terry and Kathie Edeli *

Jeannine and Alain Farhi
 Daniel Flores
 Priscilla and Henry Frisch ❖
 Gary and Shirley Garboden
 Ron and Gloria Greenwald
 Jim and Anne Harding
 Bill and Nancy Heaslip
 John Herman
 Jonathan Holman and Diana Grand

Carole Holman
 Beverly Hutchinson
 Kathleen Janger ❖
 Joseph and Marina Jeng
 Tom and Carole Keese
 Pamela and Roger Kostmayer
 Janice and Manny Kursky
 Dr. Hanimireddy and Mrs. Vijaya Lakireddy
 M.E. Loree

❖ 5 Year Consecutive Donors * 10 Year Consecutive Donors ▲ 15 Year Consecutive Donors * 20 Year Consecutive Donors
 ❖ 25 Year Consecutive Donors

ANNUAL FUND

CURRENT & FORMER GRANDPARENTS, *continued*

Pushpa and Raman Patel ❖	SawTeen See	Mini and Don Takeuchi
Susan and Robert Post	Gene and Barbara Smith	Thomas and Karen Tobin
Carol Risher ❖	Joan Spero and C. Michael Spero ❖	Jack and Sue Whitelaw
Leslie Roffman and Bob Goodwin	Carolyn and Stephen Spitz	Jean and Lew Wolff
Ann and Michael Rothschild	Lou and Vida Sullivan	Malgorzata and Krzysztof Ziola
Philip and Judy Ryan ❖	Jim and Joan Swanson 🌸	

FORMER STAFF

Matt Allio 🌸	Melissa Holman-Kursky ❖	Jeanette Moore ❖
Marie Bergstedt ❖	Helen Mae Lee ❖	Bethany Paves ❖
Paloma Cotton-Herman 🌸	Jane Loeser	Miriam Phillips ❖
Terry Edeli ❖	Linda Louie ❖	Andrea Reed ❖
Harald Frohlich	Charlie Meade *	Steve Rubin ❖
Doug and Karen Goodkin ▲		

FRIENDS

Jorge Godoy Coy	Laika Farooq Kayani	Steve and Devon Rubin ❖
Julia Russell Eells and John Eells	Ben Mangan and Wileen Chan	Basuki Tedjukusumo
Susan Kaplan	Kathy Robertson	

CORPORATE MATCHING ORGANIZATIONS

AbbVie	Dolby Laboratories, Inc.	Pacific Gas and Electric Co.
Alliance Bernstein L.P.	Dropbox	Qualcomm Foundation
AmazonSmile Foundation ❖	eBay Foundation	Ripple
Anonymous	Eugene M. Lang Foundation ❖	Roblox
Apple 🌸	Facebook	Salesforce Foundation ❖
Autodesk ❖	Genentech, Inc.	State Street
BlackRock ❖	Gilead	SurveyMonkey
The Campbell Foundation ❖	Google Inc. ❖	Twilio
Chan Zuckerberg	Heising-Simons Foundation	Two Sigma Ventures
Chevron Corporation ▲	Jean and Lewis Wolff Family Foundation	Visa
Cisco Foundation	Linkedin Matching Gift Program ❖	The Walt Disney Company Foundation
Clorox Gift Campaign	Macy's	Wells Fargo
Costco Wholesale Corporation ❖		

IN-KIND GIFTS

Michael Demmer and Rachel Benson ❖	Bare Bottle Brewing
------------------------------------	---------------------

❖ 5 Year Consecutive Donors 🌸 10 Year Consecutive Donors ▲ 15 Year Consecutive Donors * 20 Year Consecutive Donors
❖ 25 Year Consecutive Donors



2020-2021 ANNUAL REPORT

VOLUNTEERS

In addition to their incredible philanthropy this past year, SFS parents and guardians gave their time and talent in so many ways despite the limitations of health and safety restrictions imposed by the pandemic. In the absence of campus tours for prospective families, SFS students, alumni, and parenting adults volunteered as ambassadors for the Admissions Office, serving on panels and making phone calls to share their knowledge and stories from SFS. Room Representatives organized small social gatherings whenever possible and hosted Zoom happy hours. The Family Association tirelessly provided virtual holiday parties, family education, and social activities throughout the year. Parents and guardians also supported on-campus events like heritage celebrations and staff appreciation from outside the gates and opportunities such as the Weekend of Service and California Coastal Cleanup. We are deeply grateful to the many volunteers who sustain our school and community.

ADMISSIONS

- Poppy Alexander
- Sharvari Apte
- Polly Arenberg
- Rachel Benson
- Shveta Berry
- Priya Bhatia
- Nisha Birla
- Lamisse Droubi
- Jen Faenza
- Diana Jansson
- Marti Maes
- Divali Magnus
- Jacquelyn Moorad
- Bethany Paves
- Ellen Perelman
- Raveena Rihal
- Fro Rosqueta
- Matte Scheinker
- Andy Slakoff
- Michael Siou
- Kendrick Vaughn

FAMILY ASSOCIATION LEADERSHIP COMMITTEE

- Neeta Takhar, Chair
- Sapna Gupta, Past Chair
- Polly Arenberg, SPEAK Representative
- Jenny Bernstein, Events Lead
- Anita Chawla, Heritage Celebrations Lead

- Jen Faenza, Environment Committee Lead
- Jenny Garboden, New Families Liaison
- Jessica Lindl, Family Education Lead
- Lyrice McTiernan, Communications Lead
- Bethany Paves, Room Rep Lead
- Raveena Rihal, Families4Families Lead
- Fro Rosqueta, Affinity Groups Lead
- Kate Ryan, SPEAK Representative
- Michael Siou, Community Cafe Lead

ROOM REPS

- Amy Alamar
- Geoff Anders
- Rahul Apte
- Meredith Barad
- Samantha Campbell
- Mark Clendenin
- Rebecca Clendenin
- Steve Cooper
- Mike Demmer
- Scott Gelin
- Beth Gillis
- Grace Goya
- Susy Jeng
- Crissy Koehler
- Christine Luby
- Umang Mehta
- Rebecca Misner
- Kim Oakes
- Bethany Paves

- Tomomi Rector
- Karla Robertson
- Erin Russell
- Heather Sullens
- Amy Thompson
- Tim Westergren
- Wanda Zerr

NON-TRUSTEE BOARD COMMITTEE MEMBERS

- Anita Chawla
- Jen Faenza
- Danielle Goodman
- Maneesh Jain
- Sid Lakireddy
- Irene Lee
- Paul McGrath
- Judy Mui
- Christian Munk
- Fro Rosqueta
- Prashant Sharma
- Raveena Singh
- Jason Spero
- Amelia Zimmermann Wolff

And many more volunteers who supported various events by decorating, baking, making special deliveries, and so much more. Thank you for making these experiences that much richer with your presence and support!

2020-2021 ANNUAL REPORT

THE SAN FRANCISCO SCHOOL ENDOWMENT

Endowment gifts provide essential income that is consistent and reliable. The San Francisco School endowment, established in 1982 and valued at \$4.8 million as of June 30, 2021, ensures long-term security for the school and a perpetual source of annual revenue that complements both annual fundraising and tuition income.

Due to the tremendous success of *Forge Our Future: The Campaign for SFS*, the School's endowment now has an additional \$4.5 in gifts and pledges receivable. The Campaign aimed to double the value of the endowment, bringing it closer to the recommended benchmark of one year of tuition revenue, and the community came together, committed to reaching that ambitious goal. Through the fulfillment of these multi-year pledges, the endowment will grow to support increased tuition assistance and faculty salaries.



ENDOWMENT GIFTS

Currently, there are 23 named endowed funds that support key priorities of the school such as tuition assistance, professional development, and program support. These funds supplement the operating budget for their designated areas, filling an important gap that is not covered by tuition income.

General Fund

Anonymous ❖
 Kevin O'Connor and Kristen Bailey ▲
 Corrine and Michael Olague ❖

Named Funds

Chester & Clara Miltibarger Fund
 Marie Bergstedt ❖

Edeli Family Endowment Fund
 Sue Schaefer and Hale Conklin ❖
 Terry and Kathie Edeli ❖

Grey Family Endowment for Academic Innovation
 George Borges ▲

Karen & Doug Goodkin Scholarship Fund
 Corrine and Michael Olague ❖

Morris Family Fund for Equity and Justice
 Steven Morris and Beth Goya-Morris
 Chris Stori and Kelly Hayashi

Ryu Program for Educator Recognition
 Marcus and Julia Ryu

Shannon Schneble Summer Scholarship Fund
 Keith Wolff and Amelia Zimmermann Wolff

Other Named Funds
 Ayrshire Foundation Fund for Teacher Development

Bal Villasenor Endowment Fund
 Baldauf Family Fund for Sustainability
 Burkhead Lau Scholarship Fund
 Chrissy Bates Memorial Scholarship Fund
 Gloria Darrow Memorial Scholarship Fund
 Dekovic Memorial Scholarship Fund
 Dekovic Memorial Scholarship Fund for Staff Development
 Frank Korn Memorial Scholarship Program
 Gamble Boyer Endowment Fund
 Gari Grant Memorial Scholarship Fund
 Hancock Fund for Teacher Development
 Maggie Weis Fund for Tuition Assistance
 Pate Family Endowment
 Patty Wright Memorial Fund for Performing and Visual Arts
 Sandler Family Endowment

Through the *Forge Our Future* campaign, the School was fortunate to receive three new named endowed gifts that honor and celebrate our faculty: the Maggie Weis Fund for Tuition Assistance, in honor of the retired Lower School Head and former PE teacher; the Ryu Program for Educator Recognition; and the Shannon Schneble Summer Scholarship Fund in memory of the retired preschool teacher and beloved summer camp instructor. Each of these restricted funds graciously recognizes the meaningful impact of our staff and ensures their enduring legacy.



LEGACY SOCIETY

We are honored to recognize the members of The San Francisco School's Legacy Society, a group of dedicated donors who have included The San Francisco School in their estate plans. Through their thoughtful vision and planning, they are providing for the future of the school.

Terry and Kathie Edeli, Head of School 1973-2008, Parents of David '91 and Joey '95, Grandparents of Lillian '30

Terry Gamble Boyer and Peter Boyer, Parents of Anna Boyer '09 and Chapin Boyer

Miriam Phillips and Charles Eley, Director of Finance & Operations 1997-2010, Parents of Anna Eley Cantrell '94 and Alexander Eley '98

If you have included The San Francisco School in your will or trust or are interested in learning more about how to do so, please contact Director of Advancement Jennifer Keese-Powell at jkeesepowell@sfschool.org or (415) 287-2003

THE FUND FOR SFS



The Fund for SFS is The San Francisco School's most important fundraising effort and we ask for the participation of the entire community to help meet the operational costs that are not covered by tuition revenue. Since 1966, SFS has inspired a passion for learning. Your investment in SFS ensures that we have the resources to continue to do so by attracting, retaining, and supporting talented faculty and staff, providing ongoing professional development, maintaining a robust financial assistance program which creates a diverse socio-economic student body, and offering dynamic curriculum and programming.

The Annual Fund campaign takes place each fall, from November through December. Gifts of all sizes are welcome and appreciated! We receive gifts from parents, guardians, trustees, grandparents, faculty, staff, alumni, alumni parents, former staff, and friends. The generosity of this community helps to make a San Francisco School education even more extraordinary.

From donating your time to naming The San Francisco School as a beneficiary in your will, there are many ways to give, and all of them are greatly appreciated. Every hour of time spent and every dollar gifted makes a difference. Thank you for helping us fulfill our humanitarian promise and provide an education that inspires.

\$100



5 Volleyballs



A Student's Lunch for a Month



10 Rapid Antigen COVID Tests

\$500



Animal Food and Care for a Year



Recorders for Upper Elementary



Last Day of School Mudpies

\$1,000



Transportation for One Field Trip



3 Student iPads



Workshop for a Teacher

\$5,000



Middle School Classroom Chairs



Naturebridge Overnight Trip



4 Staff MacBooks

WAYS TO GIVE TO THE SAN FRANCISCO SCHOOL

The San Francisco School is a 501(c)(3) nonprofit organization (#94-1629702) and gifts are tax deductible to the extent allowed by the law. The school offers various ways to support the school, including:

ONLINE

You may donate to The San Francisco School online at www.sfschool.org/donate.

BY PHONE

Gifts are gladly accepted over the phone with a credit card at 415.239.1475.

BY MAIL

The San Francisco School
300 Gaven Street, San Francisco CA 94134
attn: Advancement Office

SECURITIES

A gift to the school of appreciated securities is gladly accepted. For more details and information, please contact the Advancement Office at 415.239.1475 or advancement@sfschool.org.

AS A MATCHING GIFT

Many employers have established a matching gifts program that allows an employee's gift to be matched, often 1:1. Please ask your employer about their matching gifts guidelines. If available, please inform the school that the gift will be matched at the time of the donation.

AS A BEQUEST

For more information about including The San Francisco School in your estate plans, please contact the Advancement Office at 415.239.1475 or advancement@sfschool.org.

THANK YOU FOR YOUR SUPPORT.

CONGRATULATIONS!

**SFS
GRADUATES**





CLASS OF 2021

The 8th Grade had a challenging final year at SFS of masking, distancing, and a combination of remote and in-person learning both in- and outdoors, largely at our temporary satellite campus on Tunnel Avenue. They were patient, compassionate, creative, and above all resilient. Thankfully, they were able to return to the Gaven Street campus for their final weeks of school. Both joyful and sentimental, those weeks were savored by all. Many time-honored 8th Grade traditions were reimagined. The annual 8th Grade vs. Staff competitions took place at nearby Palega Park. Graduation was celebrated in the Community Center with each student's household members while extended family and friends attended via live stream. Though the ceremony was altered by COVID, it maintained key rituals and traditions, including student reflections, personalized speeches for every graduate, song, and celebration. Congratulations Class of 2021 graduates!

CLASS GIFT

The Class of 2021 made combined contributions totaling \$250,000 to the *Forge Our Future* campaign leaving a lasting gift to The San Francisco School that will continue to grow and impact our people, place, and program for generations to come.

HIGH SCHOOL ENROLLMENT

Archbishop Riordan High School
 The Bay School of San Francisco
 Drew School
 International High School
 George Washington High School
 Jewish Community High School

Lick-Wilmerding High School
 Mission High School
 Ruth Asawa San Francisco
 School of the Arts (SOTA)
 Sacred Heart Cathedral Preparatory
 San Francisco Girls' School

San Francisco Waldorf High School
 St. Ignatius College Preparatory
 University High School
 The Urban School of San Francisco
 Vandegrift High School (Austin, TX)

CONGRATULATIONS!

SFS GRADUATES

CLASS OF 2017

Congratulations to the Class of 2017 on their high school graduation. We had the pleasure of hosting many Class of 2017 alumni and their parents and guardians at a picnic in McLaren Park on May 15, 2021. It was such a joy! For many, it was the largest social gathering they'd attended after a year of distance learning or working from home. We have so much pride and hope for all of them, and cannot wait to hear about the many ways they will make a difference in this world! Wishing them all the best in their next adventure.



COLLEGE AND UNIVERSITY ENROLLMENT

Cal Poly San Luis Obispo
City College of San Francisco
Claremont McKenna
Haverford College
Loyola Marymount University
Northeastern University
Oberlin College

Occidental College
Pitzer College
Suffolk University
Tufts University
University of California, Berkeley
University of California, Riverside
University of California, Santa Barbara

University of California, Santa Cruz
University of Michigan
University of Nevada, Reno
University of Southern California
University of Utah
Villanova University

This is a partial list. If you don't see your school, please let us know. We'd love to hear from you!



HERE'S THE SCOOP: MUD PIES WITH SFS ALUMNI

Students of The San Francisco School are diverse. This is reflected in the dreams, accomplishments, and work of SFS alumni after they exit the Gaven St. gates. There is no typical SFS graduate — their education and experiences can't be generalized or stereotyped; they are all over the world; and they are following their passions and fulfilling their humanitarian promise.

Our alumni are never far from our minds and hearts. To celebrate them and their pursuits, Head of School Steve Morris caught up with Chad Williams '90 and Paul Gross '11 for a new series of interviews called *Here's the Scoop: Mud Pies with SFS Alumni*.

Chad Williams '90 is currently the Samuel J. and Augusta Spector Professor of History and African and African American Studies at Brandeis University in Waltham, Massachusetts. Chad and Steve talk about discovering his Black identity, his essential reading list, writing about the Little Rock Nine in 5th grade, the most influential hip hop artists, and the importance of teaching African American history.

Paul Gross '11 is the Co-Founder and CEO of Remora, an innovative startup that's working to turn America's two million semi-trucks into a roving fleet of carbon removal devices. Paul and Steve talk about the impact of middle school science class and *An Inconvenient Truth*, biking across the USA, and shifting from politics to business to make a bigger impact on the world. Featuring a Zoom bomb by former SFS science teacher Brian Donovan!

See the video interviews and more (like Chad's essential reading list and Steve's hip hop playlist) at www.sfschool.org/alumni/heres-the-scoop.

COMMUNITY NEWS

ALUMNI

Dorian Wiederholt Kassar '15 graduated from The Bay School and is now a sophomore at Colorado College majoring in Philosophy. For the past five years, he has been teaching self-defense and personal safety in the Bay Area with André Salvage and Associates. He currently works with teens and tweens one-on-one as a mentor and speaks at schools on topics including authenticity, communication, and well-being. **Yma Vivanco Airaghi '12**, SFS substitute and Extended Day instructor, writes, "Being back at SFS has felt a little bit like coming home — so many familiar spaces and faces ready to welcome me back! After graduating from UCSC, I moved back to San Francisco and started working with a couple of different local youth-focused organizations. In the last few years, I developed a love for rock climbing, baking, and running. I just ran my second half-marathon this year!" **Sam Green '07** recently started a new role as a Foreign Affairs Officer with the US Department of State in Washington, DC focusing on Central Asia. **Dina Greenwald '92** and her partner Charles Golling are current SFS parents. She writes, "My daughters are loving school, and we feel so lucky they get to enjoy the same warm atmosphere that my brother **Abo Greenwald '90** and I had (and we are also so happy that my nephew is now attending!). We feel confident in the values and education that the School is providing. I particularly enjoy hearing familiar songs they sing and hearing about activities that I also did. Having a second generation go through SFS is very special, and I am so grateful for the huge role that SFS played in shaping who I am today."

Do you have news to share? We are always interested in hearing from our SFS alumni.

Visit www.sfschool.org/alumni/update

ALUMNI REMEMBRANCES

Peter Soracco passed away in San Bruno in April 2021. He is survived by his wife of 44 years and former SFS Front Desk receptionist Colleen as well as his children **Brittany Soracco '97** and **Pierce Soracco '00**. During his career in the entertainment industry, he spent 40 years at KGO-TV/ABC as stage manager, director, and lighting designer, earning two local Emmy Awards. He provided lighting design for the Bohemian Club and supported local events such as the Monterey Jazz Festival, community theater and dance productions.

Ann Macrae died peacefully in her Ingleside home in May 2021. Ann had a 30-year career as a faculty member at San Jose State University, notable in part for her development of a distance-learning module for international students. She was the director of SJSU's psychosocial occupational therapy clinic for 20 years, and in 1997 she became a Fulbright Fellow at the University of Malta. She returned many times to teach and consult with the Malta Mental Health Services. A lover of history, family traditions, world cultures, mystery novels, gemstones, and gardening, Ann was an avid world traveler. Her children **Nora Hemm '00** and **Malcolm Hemm** (who attended SFS from preschool to 3rd grade) and her brother Francis Macrae, former South Class Preschool Teacher, and his wife Anne Macrae Moran were present at her side.

Melissa Smith passed away in San Francisco in September 2021 surrounded by her husband David Keith, her son **Owen Keith '08**, her brother, and friends. For 25 years she was the Conservatory Director of A.C.T. where she revitalized the internationally recognized MFA program and mentored hundreds of students. After graduating from the Yale School of Drama, she performed and instructed in a myriad of theaters; she played Dolly, the sister of her drama school classmate and longtime friend Frances McDormand, in the Academy Awards' 2021 Best Movie "Nomadland."



2021-22 BOARD OF TRUSTEES

Snuller Price,
Chair

Libby Reder,
Vice Chair

Jalen Allen '08
Britt Anderson
Thea Anderson '90
Rachel Benson
William Duff, Jr.
Julia Russell Eells
Josué Estrada
Alison Gass
Asha Gohil

Sapna Gupta
James Harding
Tracy Kaplan
Ben Mangan
Steve Morris
John Palmer
Judy Pérez-Díaz
Paige Sandoz
Baljeet Singh
Kendrick Vaughn
Dave Whitelaw
Keith Wolff
Mina Zargham '03



300 Gaven Street
San Francisco, CA 94134
415.239.5065 sfschool.org

NONPROFIT ORG.
U.S. POSTAGE

PAID

SAN FRANCISCO, CA
PERMIT NO. 12014

SAVE THE DATES!

PLEASE MARK YOUR CALENDAR FOR:

Retirement Party for Doug Goodkin,
Maggie Weis, and Laura Burges (on campus)

April 9, 2022

SFS Alumni Concert

May 28, 2022


PresidioTheater


Graduation

June 10, 2022

All plans are provisional

Ways to stay connected!

 facebook.com/thesanfranciscoschool

 instagram.com/sfschool

 The San Francisco School
Alumni Group

Update your contact information at
sfschool.org/alumni

